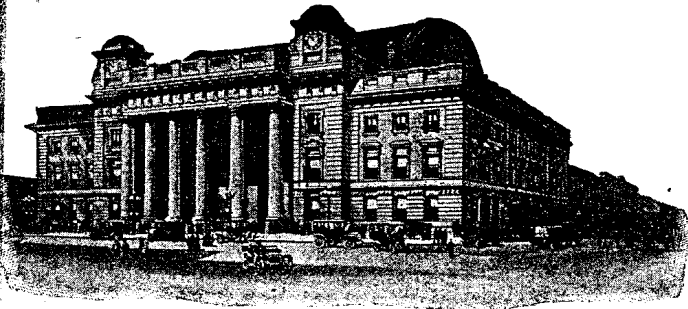


MAY, 1916

CHICAGO  
AND  
**NORTH WESTERN**  
LINE

*Chicago and North Western Railway*



*Passenger Terminal  
Chicago  
Chicago and North Western Railway*

Complete  
Passenger  
Schedules

The Best of Everything

A. C. JOHNSON,  
PASSENGER TRAFFIC MANAGER,

C. A. CAIRNS,  
GEN'L PASS'R AND TICKET AGENT,

CHICAGO AND NORTH WESTERN RAILWAY, CHICAGO, ILL.

GEO. H. MAC RAE,

GEN'L PASS'R AGENT, O. ST. P. M. & O. RY., ST. PAUL, MINN.

For time of Suburban trains to and from Stations in the following list marked G, M, N or W see Suburban Time Tables: G—Galena Division; M—Milwaukee Division; W—Wisconsin Division; N—Line between Mayfair and Milwaukee via Niles Center on the Milwaukee Division. Stations marked \* are located on the Division indicated by the table number, or in the Suburban folder indicated by the letters, G, M, N or W; but are not shown in the table in this folder, and Prefix + means prepaid Freight Station only.

Table with 10 columns labeled TABLE NO. and 10 rows of station names and numbers. Includes entries like Ironwood, Mich., Lake Crystal, Minn., Long Pine, Neb., etc.